



## WHERE VISION MEETS PRECISION

Our unique light guide is an innovative illuminated bougie that provides a precise visual path for surgical procedures.

[LEARN MORE](#)

INVENTED BY PROFESSOR NASER DIB WHO RECOGNIZED THE NEED FOR A BETTER VISUAL GUIDE THAN THE STANDARD BOUGIE DURING BARIATRIC SLEEVE SURGERY.



**“Traditionally in sleeve gastrectomy, a standard 36Fr size bougie is used for calibrating the stomach sleeve and for a stomach leak test. As a conventional bougie is hardly visible through the stomach wall, I decided to develop a new one.”**

DR N/DIB, SURGICAL PHD  
LAPAROSCOPIC AND COLORECTAL SPECIALIST



PORT FOR SUCTION AND LEAK OR DYE TEST



LIGHT FIBER

LIGHT HANDLE

The Gastric Light Guide includes an unmatched combination of features in one device.

- **Two-channels**
  1. Full length light fiber
  2. Suction or Leak test
- **One insertion**  
Multi-channel bougie allows all functions to be performed with one device and one insertion



ILLUMINATED BOUGIE



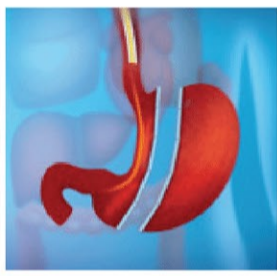
Just after intubation, with light on, the anesthetist places the GLG through the oral cavity and esophagus into the stomach.



Guided by the well-lit bougie seen through the stomach wall, the surgeon positions the GLG along the lesser curvature. Once in position turn suction on.



Subsequently, using an endo-stapler, surgeon cuts off a part of the stomach along the line indicated by the illuminated bougie.

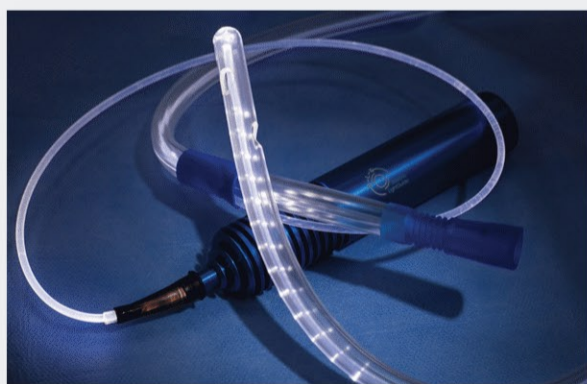


Remove stomach specimen, then perform leak or dye test. After test remove the GLG.

## HOW IT WORKS - VIDEO



## PRODUCT BENEFITS



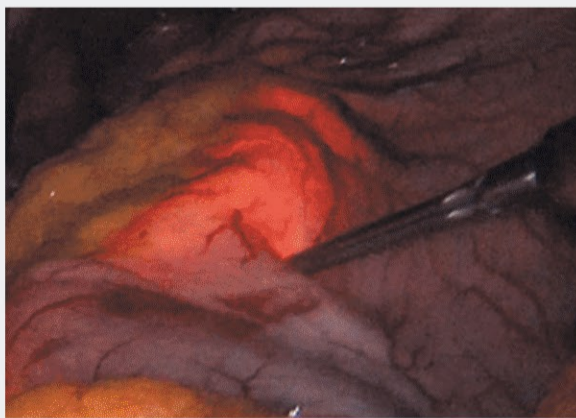
A unique light channel runs the full length of the bougie illuminating the oral cavity and pharynx for safe and proper insertion into the esophagus and stomach.

Once in place along the lesser curvature, the Gastric Light Guide transilluminates the anterior stomach wall while suction holds it in place, highlighting the shape of the bougie and allowing the surgeon to see the best path for stapling.

## VISION + PRECISION = OUTCOMES

The Gastric Light Guide gives the surgeon and anesthetist critical visual guidance, reducing the risk of intraoperative and post procedure complications, **reducing procedure time, and improving outcomes.**

[DOWNLOAD PDF](#)



## TECHNICAL AND ORDERING

PRODUCT	CATALOG NO.
<b>Gastric Light Guide (Single use system)</b>	GLG001
36FR double channel bougie with fiber optic illuminations	
<b>Light Handle (Reusable)</b>	TYPE 8
LED light source, battery operated with neutral light effect	

Currently available in Poland, Spain, Italy, Belgium, Austria, Germany, Switzerland, Australia, New Zealand, Malaysia, and Korea (coming soon to Mexico, Panama, Colombia).

PATENT PENDING

DISTRIBUTORS WANTED

[CONTACT US](#)

### WEBSITE

Privacy & Cookies Policy  
Contact Us

### CONTACT US

Izzat Dugha  
Managing Partner  
+971 55 727 55 66  
izzat@medicaglobe.com

medicaglobe.com  
Dubai, UAE

Digital Agency Glasgow by Think Zap  
© 2019 Gastric Light Guide

